

## Specifications

Pan Europe / Pan Asia				
<b>Pump</b>	Dimension	34.1 x 16.5 x 26.0 cm		
	Weight	4.5 kg		
	Case Material	Fire Retardant ABS		
	Supply Voltage	220 - 240 V, 50 Hz		
	Operating Cycle	10 / 15 / 20 / 25 mins (Alternating), 1 / 2 / 3 / 4 hrs (Turning)		
<b>Mattress</b>	Dimension	Cells	Length	Width
		20	200 cm	85 / 90 cm
				Height
				13 cm ( 5 in ) - cell
				25.4 cm ( 10 in ) - side bolster
Type	Replacement			
Weight	12.5 kg			
Top Cover Material	4-way stretch PU, polyester cover with welded seams			
Cell Material	TPU			
Maximum Patient Weight	180 kg			

Middle East				
<b>Pump</b>	Dimension	34.1 x 16.5 x 26.0 cm		
	Weight	4.5 kg		
	Case Material	Fire Retardant ABS		
	Supply Voltage	220-240, 50/60 Hz		
	Operating Cycle	10 / 15 / 20 / 25 mins (Alternating), 1 / 2 / 3 / 4 hrs (Turning)		
<b>Mattress</b>	Dimension	Cells	Length	Width
		20	200 cm	90 cm
				Height
				13 cm - cell
				25.4 cm - side bolster
Type	Replacement			
Weight	12.5 kg			
Top Cover Material	4-way stretch PU, polyester cover with welded seams			
Cell Material	TPU			
Maximum Patient Weight	180 kg			

North America				
<b>Pump</b>	Dimension	13.4 x 6.5 x 10.2 in		
	Weight	9.9 lbs		
	Case Material	Fire Retardant ABS		
	Supply Voltage	110 - 120 V / 60 Hz		
	Operating Cycle	10 / 15 / 20 / 25 mins (Alternating), 1 / 2 / 3 / 4 hrs (Turning)		
<b>Mattress</b>	Dimension	Cells	Length	Width
		20	78.7 in	35.4 in
				Height
				5 in - cell
				10 in - side bolster
Type	Replacement			
Weight	27.5 lbs			
Top Cover Material	4-way stretch PU, polyester cover with welded seams			
Cell Material	TPU			
Maximum Patient Weight	397 lbs			

Pump: water resistant standards (IP21); Mattress: flame retardant standards (EN597-1, EN597-2), RoHS, WEEE  
 \*\*Internal test conducted in a controlled environment

Wellell Inc.  
 Print-2025.03 All rights reserved

# Optima Turn

## Automated Lateral Rotational Pressure Relief Solution



Be well, Live well  
**Wellell**

# Optima Turn

## Automated Lateral Rotational Pressure Relief Solution

Optima Turn is a pressure relief support surface designed to enhance pressure injury prevention and reduce caregiver workload for repositioning. This Automated Lateral Rotation Mattress System offers multiple therapy modes, providing crucial support for patients at risk of pressure ulcers. The repositioning turns with various turning cycle options, reducing nursing injuries and workflow bottlenecks.

### Labor-Intensive workflow on repositioning

2~4 hours

to reposition the patient is recommended by clinical guidelines.<sup>(1)</sup> However, the variables related to the patient's conditions and the support surface will influence the frequency of repositioning.

61.5 %

Nurse's back pain caused by moving or lifting patients within bed.<sup>(2)</sup> Musculoskeletal injuries from frequent patient handling are common during care delivery and can significantly impair the care workforce.

### Values and Solutions



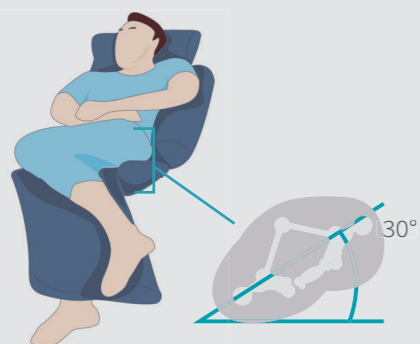
**Ensure consistent repositioning quality, improve PI prevention, and further reduce caregiver workload**

Automatic turning mode reduces the number of caregivers required from 2-3 to just 1, minimizing patient handling complexity and the variability in caregiving practices.



**Provide a safer and more effective repositioning solution for bedridden patient.**

System enables alternating during turning for superior pressure relief, while bolsters design can provide a safer turning function that would seamlessly fit in caregiver's daily workflow.



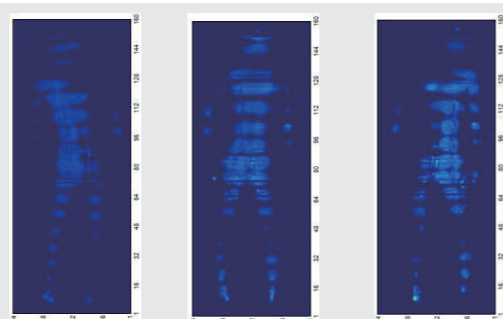
### Effective Pressure Relief by Automated lateral Rotation

Through the alternating air cells matching the bodyline with 30° of turning, the pressure mapping shows the ideal pressure redistribution is achieved.



Position	Left Turn	Supine	Right Turn
<32mmHg(30°)	97%-99%	95%	97%-99%

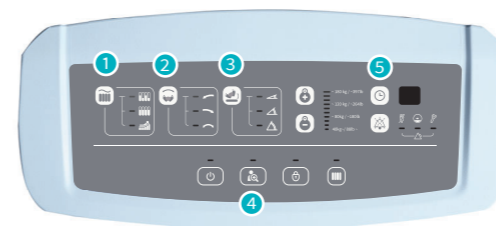
Pressure Mapping (Weight 75 Kg)



# Optima Turn

## Automated Lateral Rotational Pressure Relief Solution

The thoughtful user experience design of Optima Turn has the turning function embedded with alternating to provide optimal pressure relieving, also minimizing changes to existing workflows while providing greater efficiency and comfort for both patients and caregivers.



### Pump Features VALUE

- 1 **Therapy mode** ALT/ CLP/ Seat Inflation
- 2 **Turning mode** left /right/ left-right turn
- 3 **Angle setting** for 10°, 20°, and 30° turns
- 4 **Skin check mode** Quick left and right turning for checking the skin status
- 5 **Time selection**  
1/2/3/4 h: Scheduled turning dwell time  
00h: Single-sided manual turning mode for one-time turning assist



### Mattress Features VALUE

- 6 **Turning-cell ventilation connectors**  
For emergency needs of letting patient back to supine position
- 7 **Side bolster control knob**  
Deflates both side bolsters for patient transfer. Built-in safety mechanism while the bolster is not fully inflated, the turning mode will not be activated
- 8 **Side bolster with lower border design**  
For slip prevention and proper tubing management



Reference:  
1. Courtney H. Lyder; Elizabeth A. Ayello. Patient Safety and Quality: An Evidence-Based Handbook for Nurses -Chapter 12 Pressure Ulcers: A Patient Safety Issue  
2. Owen B. D. (1989). The magnitude of low-back problem in nursing. Western journal of nursing research, 11(2), 234-242.